

Add a Flyout Menu to Your Site and Watch Your Site Traffic Grow.

Congratulations on your decision to add this tool to your site. Flyout Menu Left (FML) will increase your site click through rate by providing a navigation menu for those special sections that are hard to find or not easily organized with a single tier navbar.

		Title
Tier 3	Tier 2 --	Home --
Tier 3	Tier 2 --	Tier 1 --
Tier 3	Tier 2	Tier 1 --
		Title 2

By: Tim Koen, Webmaster

Best-Website-Tools.com

LEGAL NOTICE

The Author, his publishers, agents, resellers or distributors assume no liability or responsibility to any person or entity with respect to any loss or damage or alleged to be caused directly or indirectly by the use of the downloads or the advice and information given in this publication. This publication is not intended for use as a source of business planning or management but for information purposes only.

COPYRIGHTS

Copyright, Licenses and Idea Submissions.

The entire contents of this publication are protected by international copyright and trademark laws. The owner of the copyrights and trademarks are Best-Website-Tools.com, its affiliates or other third party licensors. YOU MAY NOT MODIFY, COPY, REPRODUCE, REPUBLISH, UPLOAD, POST, TRANSMIT, OR DISTRIBUTE, IN ANY MANNER, THE MATERIAL IN THIS PUBLICATION, INCLUDING TEXT, GRAPHICS, CODE AND/OR SOFTWARE. You may print and download portions of material from the different areas of the Site solely for your own non-commercial use provided that you agree not to change or delete any copyright or proprietary notices from the materials. You agree to grant to Best-Website-Tools.com a non-exclusive, royalty-free, worldwide, perpetual license, with the right to sub-license, to reproduce, distribute, transmit, create derivative works of, publicly display and publicly perform any materials and other information (including, without limitation, ideas contained therein for new or improved products and services) you submit to any public areas of the Site, Best-Website-Tools.com (such as bulletin boards, forums and Dedicated Newsgroups) or by e-mail to Best-Website-Tools.com by all means and in any media now known or hereafter developed. You also grant to Best-Website-Tools.com the right to use your name in connection with the submitted materials and other information as well as in connection with all advertising, marketing and promotional material related thereto. You agree that you shall have no recourse against Best-Website-Tools.com for any alleged or actual infringement or misappropriation of any proprietary right in your communications to Best-Website-

Tools.com.

DISCLAIMER

EVERY EFFORT HAS BEEN MADE TO ACCURATELY REPRESENT THIS PRODUCT AND IT'S POTENTIAL.

The author and publisher disclaim any warranties (express or implied), merchantability, or fitness for any particular purpose. The author and publisher shall in no event be held liable to any party for any direct, indirect, punitive, special, incidental or other consequential damages arising directly or indirectly from any use of this material, which is provided “as is”, and without warranties.

[Introduction](#)

Chapter 1: [How to Use FML](#)

Chapter 2: [The Bulleted List](#)

Chapter 3: [CSS Styles](#)

Chapter 4: [How to Make FML Work](#)

Chapter 5: [Advanced Techniques](#)

Appendix A: [Customer support](#)

Introduction to Flyout Menu Left

The premise behind FML is to create a custom navbar that you can use with UYOH or BlockBuilder in Site Build It! Changing the menu to flyout from the right instead of the left is one simple change. I will get to that later but for now it is important to understand how the menu works.

Okay here we go. FML is a combination of a bulleted list and a CSS file. CSS stands for cascading style sheet. A cascading style sheet holds all the parameters that make your webpage look and act the way it does. With CSS you can style a bulleted list. A bulleted list known as an unordered list in HTML terms uses two main tags and . UL stands for 'unordered list,' and LI stands for 'list item.'

To define an unordered list you use the tag. To add items to that list you use the tag. Like This:

```
<ul>
<li>first item</li>
<li>second item</li>
<li>third item</li>
<li>ad infinitum</li>
</ul>
```

The last tag closes the list. The tag closes the list item. This is important for trouble shooting purposes.

FML uses a series of list items ordered in a fashion that develops first, second and third tiers for the menu. The first tier appears normally on your website. When you mouse over it, list items (if there is a second or third tier) flyout to the left. Allowing for more navigation options. FML stacks these lists in a 1,2,3 fashion, or tier three is under tier two and tier two is under tier 1.

The CSS file for FML contains the necessary styling to make the 'flyout' work. It also contains styling to control the look and feel of the list items. To make the menu match your site you will need to modify the CSS file appropriately. We will get to that in a bit but keep reading for now.

With a CSS file you can pre-determine the way things look and work. FML uses an '#id' tag to style different aspects of the menu. The main css id tag is called 'menuleft.' With CSS you can style specific areas of content. One way to do this is to combine an 'id' with a <div> tag. A Div tag is short for division and identifies a section or space on your webpage.

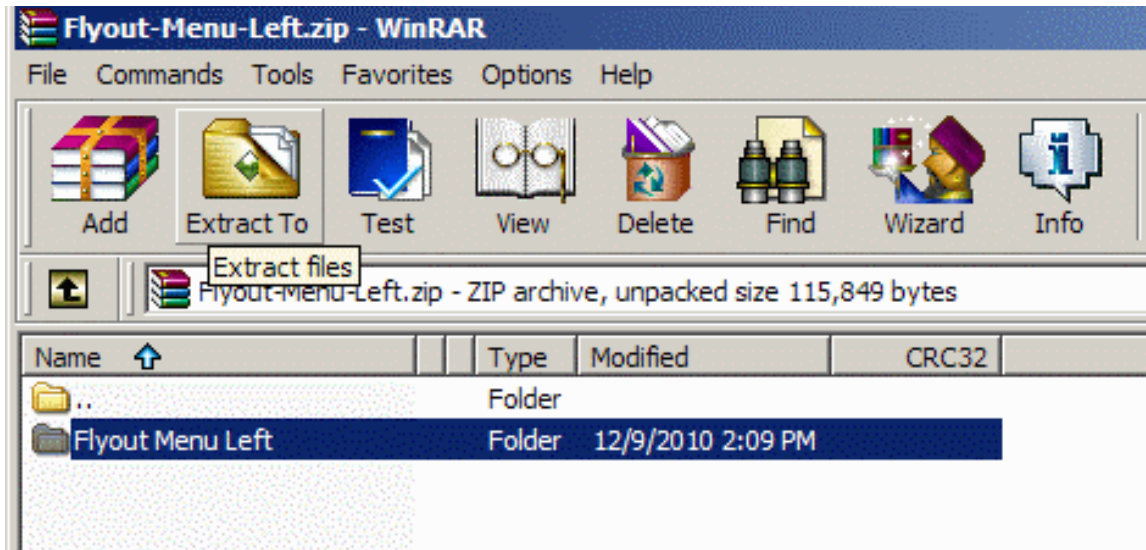
FML uses the tag <div id="menuleft"> to specify the space for the menu. Notice the very last tag in the menu is </div> this last tag closes the space used by FML. This is important for trouble shooting purposes. Every <div> tag needs to be closed by a </div> tag. These tags need to be matched perfectly otherwise results will vary.

More on styling later. For now let's move onto the bulleted list.

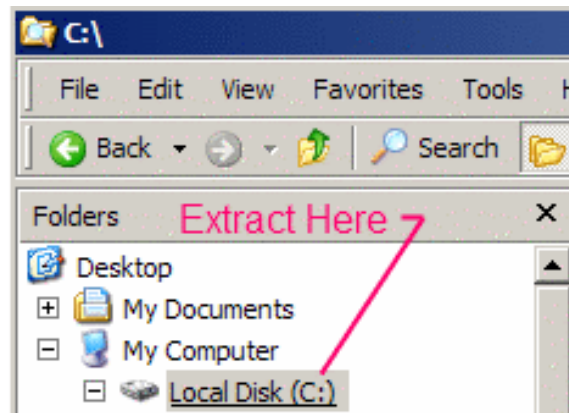
How to Use Flyout Menu Left

I am sure you are ready to dig in and start using FML and would love to get started right away. The following tutorial will help you understand how to get the most out of this menu. Please read through the page completely before beginning.

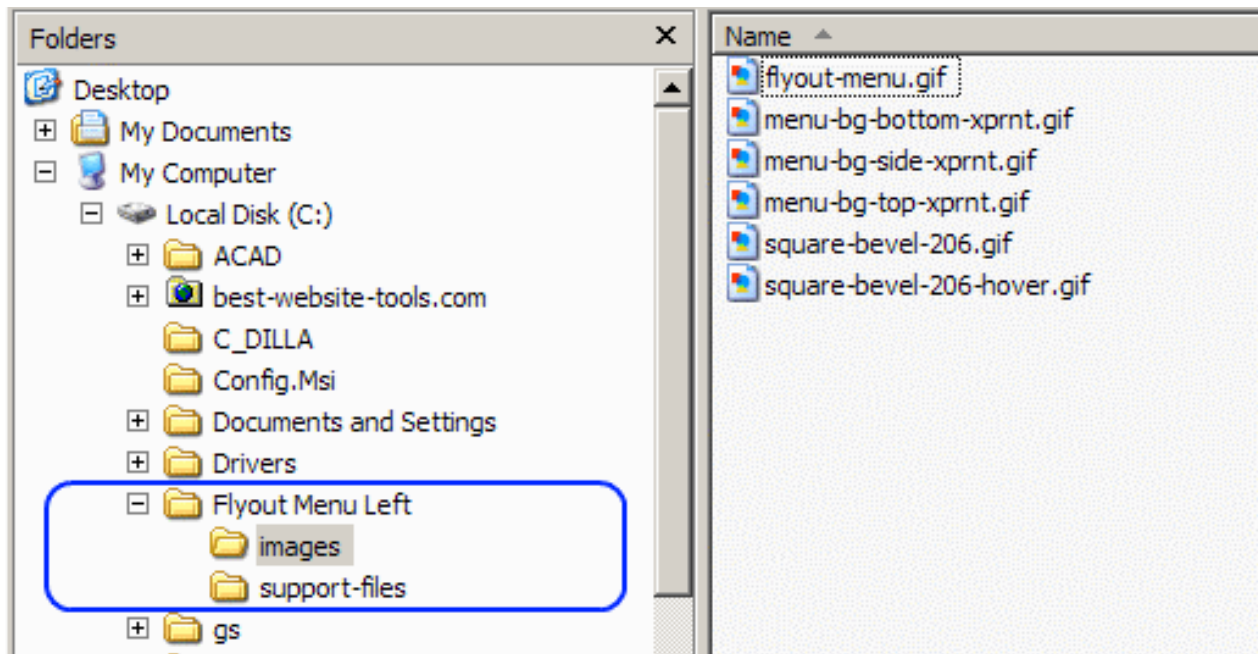
1. The zip file you received already has a directory structure built into it. When you extract the zip file. Select the top level folder and extract that to your c:\ or root directory.



It should look similar to the this image.

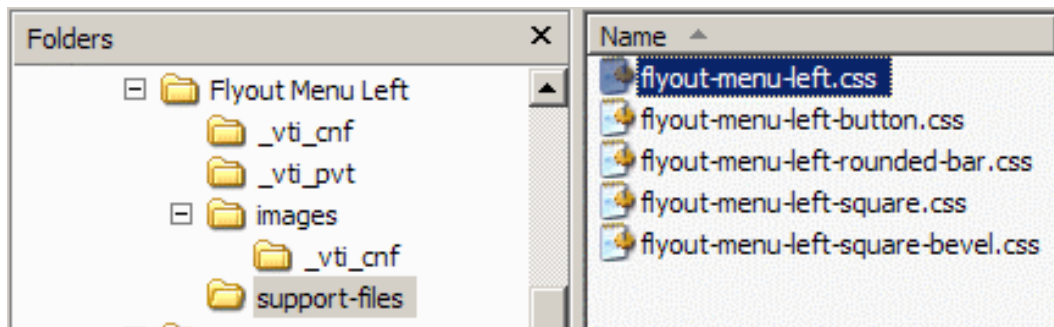


2. There are 2 subdirectories 'images' and 'support-files' that contain the necessary components in the right place. Navigate to them to see what files they contain.



All your images are in a subdirectory called 'images' as shown in the above graphic. There are several images in this file. Some images are used for backgrounds for menu buttons.

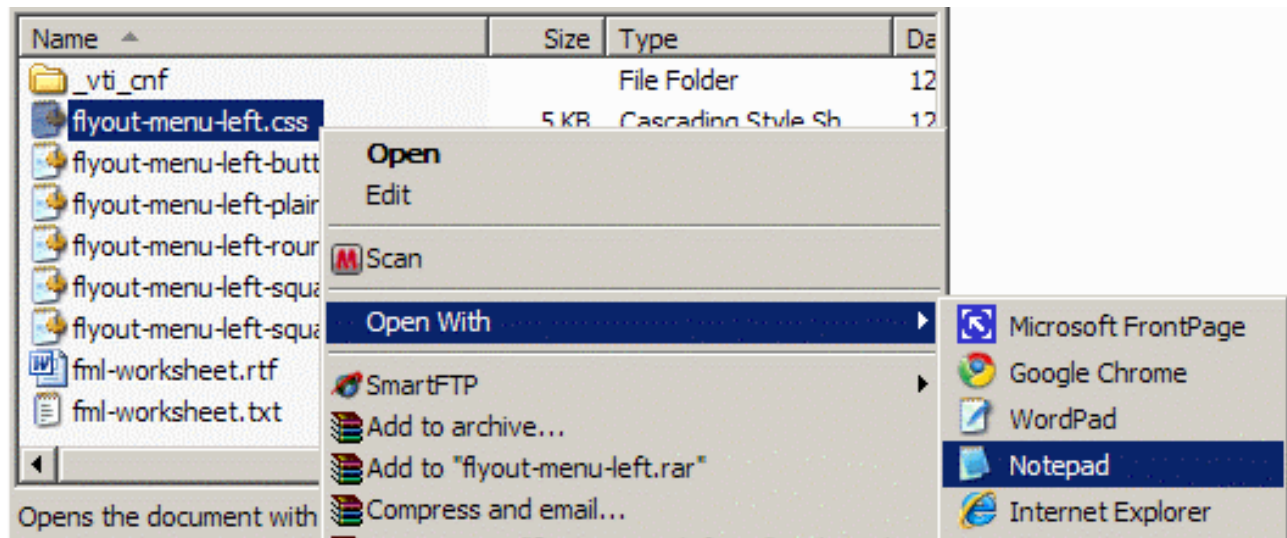
3. All the CSS files go into a subdirectory called 'support-files'. The code in FML calls these CSS files to style the menu.



Once you have your directory setup like this you are ready to begin. If you own an HTML editor and know how to use it then you can use that to open the files. If not you ***MUST*** open them in 'Notepad' or similar text editor.

Note: DO NOT use Microsoft Word to edit any files.

4. Let's start by opening 'flyout-menu-left.css' Navigate to that file in your computer and open it with 'Notepad' or similar text editor. Right click on the file and navigate to notepad.



This is where you edit the styles of the different aspects of the menu. It should look like this when open.

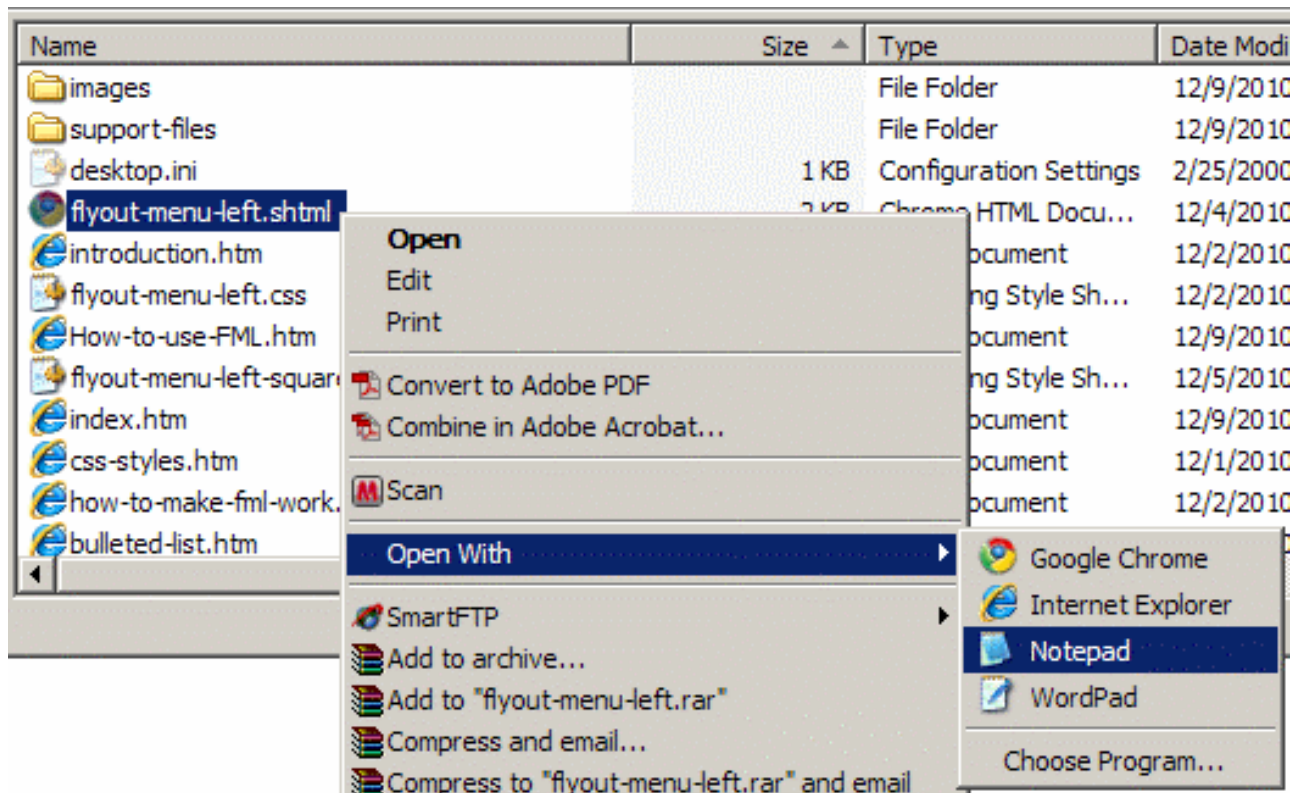
```
/*Flyout Menu Left is designed to be a flyout menu incorporated on the right side of a webpage and
flysout to the left.
By: Tim Koen, 12/1/21010
Webmaster of http://www.best-website-tools.com */

#menuleft { /*Main style for menu*/
/*width: auto;*/
width: 206px; /*Overall width of menu*/
background: #transparent; /*color of background*/
margin: auto;
border: 0px solid #A96500; display: block; /*outside border of menu, 0px is invisible*/
}

#menuleft ul {
list-style: none;
padding: 0;
margin: 0;
}
```

Go ahead and familiarize yourself with this file but don't change anything yet. You also need to open the flyout-menu-left.shtml file.

5. Open the 'flyout-menu-left.shtml'. Navigate to the file and right click to open in notepad.



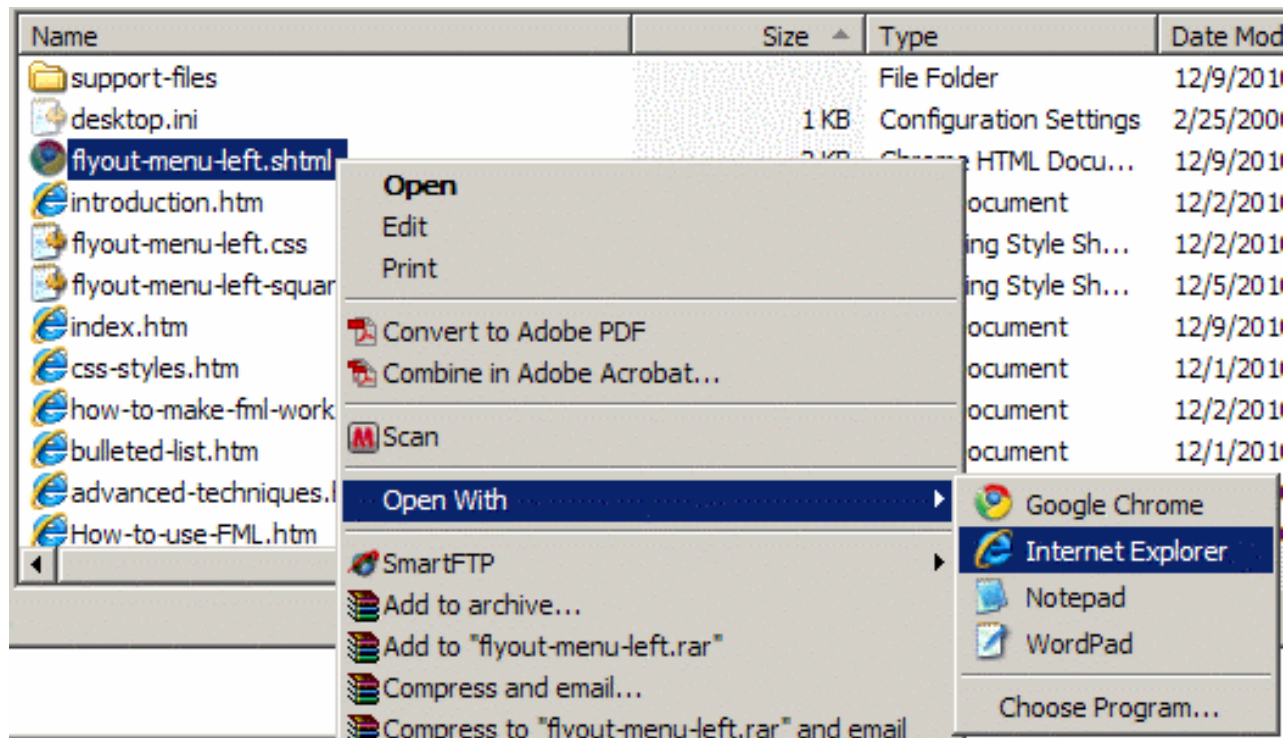
When open flyout-menu-left.shtml in 'Notepad' it should look like this:

```
<div id="menuleft">
<ul>
<li>
<h4>Flyout Menu Left<br>
Rounded Box Corner</h4>
<ul>
<li><a href="#link">Home --</a>
<ul>
<li><a href="#link">Tier 2 --</a>
<ul>
<li><a href="#link">Tier 3</a></li>
<li><a href="#link">Tier 3</a></li>
<li id="text">Easily add text to your buttons This menu powered by.
<br><a href="http://www.best-website-tools.com/Flyout-Menu.html">FML Rounded Corner
Box</a></li>
</ul>
</li>
<li><a href="#link">Tier 2 --</a>
<ul>
<li><a href="#link">Tier 3</a></li>
<li id="text"><b>
<a title="Get Flyout Menu Left" href="http://best-website-tools.com/Flyout-Menu.html">Flyout
Menu Left </a></b><p>
<a href="http://www.best-website-tools.com/Flyout-Menu.html" title="Get Flyout Menu Left">
</a><br>
The ultimate tool for building your navigation system - Flyout Menu Left.</li>
  <li><a href="#link">Tier 3</a></li>
</ul>
</li>
<li><a href="#link">Tier 2</a></li>
</ul>
</li>
</ul>

```

This file contains all the list items for the menu. You edit the links and anchor text in this file.

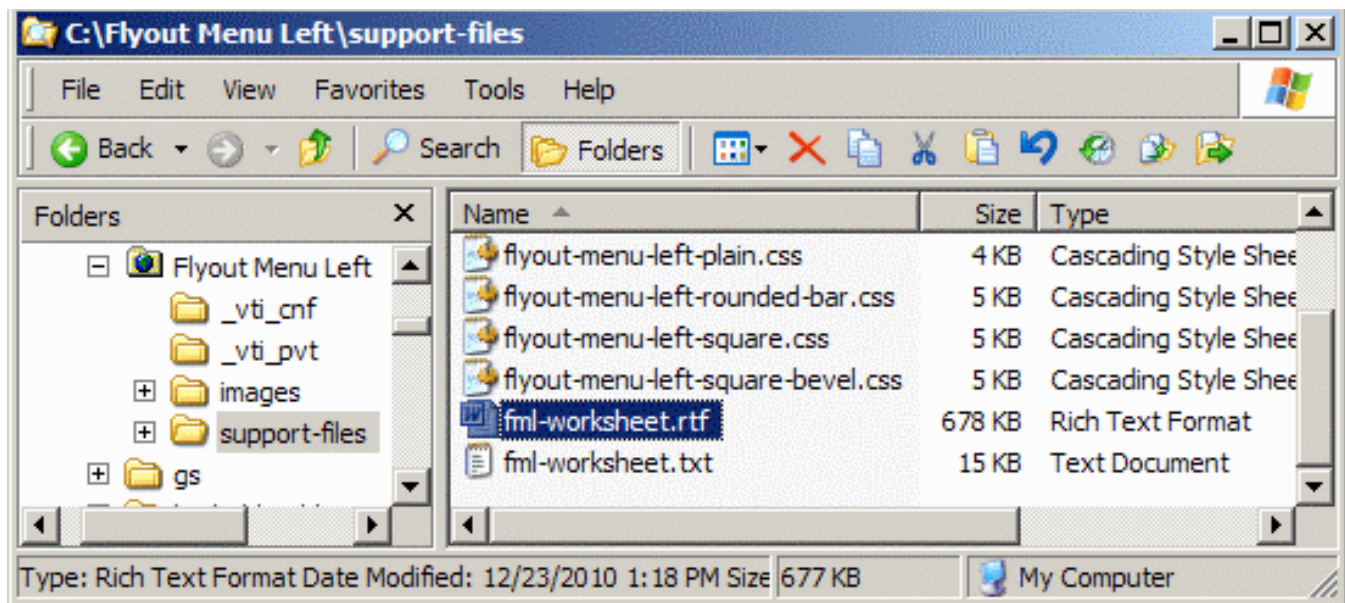
6. You can see from the graphic below that you can open this file in a web browser as well. This is one way to check your menu structure before you publish it. This is how you preview your menu before you publish it.



Go ahead and give this a try. It should open up in the web browser of your choice.

7. You are now ready to begin editing the menu to suit your needs. Later on we will go over how to upload it to your server. But for now let's tackle the principles behind how the menu works. After that we will preview, test and modify a complete menu system.

8. Use the **fml-worksheet.rtf** to help you organize your menu system. (Best viewed in MicroSoft WordPad.) The work sheet asks all the questions and recommends the best answers for all of the design parameters. If you ordered a custom menu this is the only form you need to fill in.



The work sheet serves two purposes. First it helps you define what is going to be in your menu system. Second it can help you see the different aspects of the system and how to progress. For custom menus that I build this form also acts as a communications device.

Arial 10 Western **B** *I* U

1 2 3 4 5

Flyout Menu Work Sheet

Please complete the following work sheet and email it back to me at: **support@best-website-tools.com** Please put "Flyout Menu Work Sheet" in the subject line.

The first thing you need to do is select the style of menu you want. From the tutorial and examples you would have seen the names of the different styles. So the possible answers for the style are

- A. Plain Menu
- B. Rounded Box Corner AKA Flyout Menu Left,
- C. Rounded Bar
- D. Square
- E. Square Bevel
- F. Custom (all new design)

My Menu Style is - _____

Keep reading.

The Bulleted List

The bulleted list is the heart of the menu system. Flyout Menu Left Structures the list so that there are lists within lists. In this fashion it sets up the tier structure. Please scrutinize the following code closely to understand how FML achieves the 3 tiers. The basic menu structure.

		Title
Tier 3	Tier 2 --	Home --
Tier 3	Tier 2 --	Tier 1 --
Tier 3	Tier 2	Tier 1 --
		Title 2

```
<ul>
<li><a href="#link">Tier 1 --</a>
<ul>
  <li><a href="#link">Tier 2 --</a>
    <ul>
      <li><a href="#link">Tier 3</a></li>
      <li><a href="#link">Tier 3</a></li>
      <li><a href="#link">Tier 3</a></li>
    </ul>
  <li><a href="#link">Tier 2 --</a></li>
</ul>
</li>
</ul>
```

FML also incorporates 2 'Title' styles so you can group together like pages. For instance if you have a series of articles you wish to group together. Or maybe you want to group together a product line of pages. You can title each of these sections by adding a title. Example for adding the top title.

```
<ul>
<li>
<h3>Flyout Menu Left<br>
Rounded Box Corner</h3>
<ul>
<li><a href="#link">Tier 1 --</a>
<ul>
  <li><a href="#link">Tier 2 --</a>
    <ul>
      <li><a href="#link">Tier 3</a></li>
    </ul>
  <li><a href="#link">Tier 2 --</a></li>
</ul>
  <li><a href="#link">Tier 3</a></li>
</ul>
```

```

    <li><a href="#link">Tier 3</a></li>
</ul>
</li>
</ul>

```

FML allows you to add secondary titles in the middle of the menu as well. These can be either linked or unlinked. I haven't put links on titles in this menu but you could.

'Title' is a list item but 'Title 2' is NOT a list item and should go above the first list item. Example of adding the titles.

```

<ul>
<li>
<h3>Title</h3>
<ul>
<li><a href="#link">Tier 1 --</a>
<ul>
<li><a href="#link">Tier 2 --</a>
<ul>
<li><a href="#link">Tier 3</a></li>
</ul>
</li><a href="#link">Tier 2 --</a></li>
<ul>
<li><a href="#link">Tier 3</a></li>
<li><a href="#link">Tier 3</a></li>
</ul>
</ul>
</li>
<h4>Big Brain Teaser</h4>
<li><a href="#link">Tier 1 --</a>
<ul>
<li><a href="#link">Tier 2 --</a>
<ul>
<li><a href="#link">Tier 3</a></li>
<li><a href="#link">Tier 3</a></li>
<li><a href="#link">Tier 3</a></li>
</ul>
</li>
</ul>
</li>
</ul>
</li>
</ul>

```

By using different combinations of titles and list items you can build your own custom menus. There is no limit on how big you can make your flyout menu. Nor is there any limit on the styles you can create. Which leads us to the CSS file.

CSS Styles and What They Do

Flyout Menu Left is designed to reside on the right hand side of your webpages. However with one simple change the menu can be switched to the left side and flyout from left to right.

The primary style used in FML is called 'menuleft' and sets the overall look, border and width of the menu. Here is a rundown of the styles used in FML and what they do.

The styles below describe the "Rounded Box Corner" menu Also identified as "flyout-menu-left.css."

CSS Styles and What They Do

Style	Description
#menuleft	Sets the overall background color, width and border. Back ground color may be set to 'transparent' this allows the background images and link colors to show through.
#menuleft ul	Sets the 'list style' used. Currently set to none.
#menuleft h3	Sets the main 'Title' at the top. Currently set background color to gold, background image is on and does not repeat. Font is centered.
#menuleft h4	Sets secondary 'Title 2'. Currently set border color 1px, brown. Background color set to gold. Font is set to centered. Background image is on and repeats. Top border is on (to separate list items) and set to dark gold.
#menuleft a	Sets look of all anchor links. Currently set to display as block. Text color is set to Black. Background color set to gold. Font type is template default or not stylized. Background image is on and repeats. Top border is on (to separate list items) and set to dark gold.
#menuleft a:hover	Sets Hover characteristics when curser is over it. Currently set to text color dark gold with black background. Font type is template default or not stylized. Background image is on and repeats. Top border is on (to separate list items) and set to dark gold.
#text	Sets borders, color of text set and background color. Background image on and repeats.
#text a	Sets border top and bottom to 0px. Which in turn allows the text links to appear normal. Color is set to dark blue. i.e. #0000ff. Resets padding to 0.
#text a:hover	Sets background is set to white, i.e. #fff; Text align is left. Color on hover is set to red i.e. #ff0000.
#menuleft li	Sets list items. Currently set to position: relative and text is left justified. DO NOT CHANGE THIS.

#menuleft ul ul ul	Sets flyout position and direction. Currently set to position: absolute and direction right, width 100%. Change 'right' to 'left' to get menu to flyout to the right.
div#menuleft ul ul ul, div#menuleft ul ul li:hover ul ul {display: none;} div#menuleft ul ul li:hover ul, div#menuleft ul ul ul li: hover ul {display: block;}	DO NOT CHANGE THESE EVER (unless you know what your doing). These styles make the menu fly in and out when hovered on.
#bottom	Sets the very bottom look and feel. Background color set to gold. Font is centered. Background image is on and does not repeat. Top border is on (to separate list items) and set to dark gold. Width is set to 206px to match overall menu width. You may want to adjust this to suite your needs.

As you can see a lot of variables have been incorporated in this style sheet. While this tutorial is not intended as a CSS tutorial it is easy to see that a lot of modifications can be made to customize it for your site. Which brings us to how to make FML work.

How to Make FML Work

Several components need to work in unison to achieve the desired effect. You need to have the 'flyout-menu-left.shtml' file or its contents uploaded to your server along with the 'flyout-menu-left.css' file and supporting background images.

The 'flyout-menu-left.css' file needs to be uploaded to your website root directory or 'support-files' directory if you use Site Build It!

If you use include files and upload your own HTML then you simply upload 'flyout-menu-left.shtml' into your website root or 'support-files' directory for SBI. If you use SBIs BlockBuilder you have to copy the contents of this file into a "text block."

To tie it all together you need to call the css file into your pages. That means you need a special line of code to activate the css file. `<link href="support-files/flyout-menu-left.css" rel="stylesheet" type="text/css">`

		Title
Tier 3	Tier 2 --	Home --
Tier 3	Tier 2 --	Tier 1 --
Tier 3	Tier 2	Tier 1 --
		Title 2

The supporting images basically outline or frame of the menu. For this example the outlines are a gold color with the interior being transparent. The css menu points to the 'images' directory on your server. If you want to modify this there are 4 lines of code that style the background images. They are:

background-image: url('../images/menu-bg-top-xprnt.gif');
 /*This is the background image for the top Title.*/

background-image: url('../images/menu-bg-side-xprnt.gif');
 /*This is the background image for Title 2.*/

background-image: url('../images/menu-bg-side-xprnt.gif');
 /*This is the left and right side border (on hover).*/

background-image: url('../images/menu-bg-bottom-xprnt.gif');
 /*This is the background image for bottom of the menu.*/

If you want to hide these you should comment them out instead of deleting them. Use these characters to open / * and to close */ a comment to hide a those lines. BE CAREFUL to match these comment open and close tags. Duplicate or missing tags cause the menu to act strangely. Commenting out the supporting images allows the underlying styles to show through.

Steps to complete.

1. Add your links to the bulleted list, i.e. flyout-menu-left.shtml. Replace '#link' with URLs to your specific pages. change 'Title' and 'Title 2' to what you want.
2. Upload the background images to a directory called "images."
3. Style the css file to suit your needs. See 'Advanced Techniques' for ideas.
4. Upload the 'flyout-menu-left.css' file to the 'support-files' directory if you use Site Build It!
5. Upload 'flyout-menu-left.shtml' to the root directory of your website.
SPECIAL NOTE: Site Build It Block Builder (SBI BB) you cannot upload include files so what you need to do is COPY AND PASTE the contents of the file into a text box in 'Right Hand Column Builder.'
6. Modify your template to include this line

```
<link href="http://my-domain-name/support-files/flyout-menu-left.css" rel="stylesheet" type="text/css">
```

If you upload your own HTML the line goes between the <head> and </head> tags. If you load this file into a different directory make sure you point to that directory

If you use SBI Block Builder you need to load this line into a text box in the "Right Column Builder." You also need to have the full url. So your line of code looks like this:

```
<link href="http://my-domain-name.com/support-files/flyout-menu-left.css" rel="stylesheet" type="text/css">
```

Be sure to replace "my-domain-name.com" with your domain name.

7. Test and build.

Using SBIs Right Hand Column Builder.

Here is how to set up FML in SBIs right hand column. Please be sure your domain name and file structure are set up correctly.

? Edit a Right Column

This is where you edit your right column.

Right Column Information

? Right Column Name

To insert a block here, choose block and click INSERT-->

Insert

? Headline

Block #1

Delete this Block

Text

Alignment Size

To insert a block here, choose block and click INSERT-->

Insert

? Text

Block #2

Delete this Block

Enter Text

```
<link href="http://www.best-website-tools.com/support-files/flyout-menu-left-plain.css" rel="stylesheet" type="text/css">
```

Alignment

To insert a block here, choose block and click INSERT-->

Insert

? Text

Block #3

Delete this Block

Enter Text

```
<div id="menuleftplain">
<ul>
  <li>
    <h3>FML Plain Menu</h3>
    <ul>
      <li><a href="#link">Home --</a>
      <ul>
        <li><a href="#link">Tier 2 --</a>
        <ul>
          <li><a href="#link">Tier 3</a></li>
          <li><a href="#link">Tier 3</a></li>
          <li id="textplain">Easily add text to your buttons This
menu powered by.
          <br><a href="http://www.best-website-tools.com/Flyout-
Menu.html">FML Square Box</a>
```

Alignment

To change links simply replace "#link" with your own links. Example:

```
<a href="#link">Tier 3</a>
```

Replace With

```
<a href="http://best-website-tools.com/Flyout-Menu.html">  
Flyout Menu Left </a>
```

There are a lot of ways you can modify Flyout Menu Left to achieve a number of different looks. Which brings us to using advanced techniques.

FML Advanced Techniques

There are many different look and feels you can achieve with FML and we have covered the basics. But how it works is subject to change. Change meaning the different ways to modify the files add or subtract background images or colors. For instance how did I get those rounded corners? Everything is controlled in "flyout-menu-left.css" file.

Rounded Corners Box or Setting Background images

The rounded corners box in the example menu were drawn in paint.net as .gif images. There are 3 images that create the box effect, one for the top title, one for the sides of the box and one for the bottom of the box. The top and bottom images have the rounded corners drawn in while the sides are created by a third image repeated as needed to fill in the button height.



Top image
menu-bg-top-xprnt.gif



Sides image
menu-bg-side-xprnt.gif



Bottom image
menu-bg-bottom-xprnt.gif

The width of the images are all exactly 206px wide. In the css file the 'width' of the main style, #menuleft is set at 206px wide. In this line width:206px.

The border is the only thing in these images that is visible as all other areas have been erased, leaving the content area transparent. See: menu-bg-top-xprnt.gif.

The top image does not repeat. It might look odd being taller than you might expect. But the menu only uses what it needs to cover the text, the rest is hidden. This technique allows for many lines of text.

The sides of the box are created with another background image which is a slice of the top image. This slice is only 10px high and repeats vertically as necessary to fill the space needed by the menu items. That means you could expand the height and the sides would stretch to fill the space needed. See: menu-bg-side-xprnt.gif

The bottom image is a vertical mirror image of the top. The main difference is that this image is cut to the exactly 25px high. since it does not repeat all of it shows. This limits the space available to one line of text. See: menu-bg-bottom-xprnt.gif

To turn off the background images simply comment them out (explained above). Where ever you see an image

URI comment out that line.

If you wish to create your own background images you will need at least 3 of them one for the top image, one for the sides and one for the bottom. Or contact me for a custom built menu. My rates are reasonable. Use the [Contact Form](#) to inquire.

Setting the Width

Width is set in the style '#menuleft' and #bottom in the css file. Currently it is set to 206px to match the background images. Notice that the first line is commented out. `/*width:auto;*/` Notice that the line below is not commented out. I did this to show that width can be changed to match any look and feel. If you set width to 'auto' the menu will resize to fit based on the width of the area it goes into (as in Flyout Menu Plain). Changing this value causes to horizontal size to adjust. To set a specific width replace 'width:auto;' with 'width: 100px' and adjust to desired size.

```
#menuleft { /*Main style for menu*/
/*width: auto;*/
width: 206px; /*Overall width of menu*/
background: #transparent;
margin: auto;
border: 0px solid #A96500; display: block; /*outside border of menu, 0px is invisible*/
}

#bottom { /*Bottom of menu*/
border-top: 1px solid #FE9900; display: block;
background: #ffbf35; /*color of background*/
background-image: url('../images/menu-bg-bottom-xprnt.gif'); /*background for bottom*/
background-repeat: no-repeat;
text-align: center;
width: 206px;
padding: 2px 0px 6px 0px;
margin:auto;
color: #000000;
font-weight: bold;
}
```

Width for the second and third tier buttons is set in the style '#menuleft ul ul ul' on line, 'width: 100%;'

```
#menuleft ul ul ul {
position: absolute;
top: 0;
right: 100%; /*direction of flyout actually flysout to the left. Change this value to 'left' to get the menu to flyout to the right.*/
width: 100%;
}
```

To set a specific width replace 'width:100%;' with 'width: 100px' and adjust to desired size.

```
#menuleft ul ul ul {
position: absolute;
top: 0;
right: 100%; /*direction of flyout actually flysout to the left. Change this value to 'left' to get the menu to flyout to
the right.*/
width: 100px;
}
```

The 'width' dimensions need to follow through the css file. So if you change one, change them all.

Changing Colors

Colors are set for 4 aspects of the menu, background, text, hover and border. Color generally is the text color. Background are for the menu buttons color. Border colors are incorporated in the style and appear as a number. Example: #A96500 To choose colors and get their hexadecimal number visit [Color Chart](#)

Changing Font Style

All font characteristics are controlled in the 'menuleft' style in the css file (the top one). To change or stylize font add the line below and change it to suit your needs.

font: bold 100% Georgia, verdana, arial, helvetica, sans-serif;

Example:

```
#menuleft { /*Main style for menu*/
/*width: auto;*/
width: 206px; /*Overall width of menu*/
background: #transparent; /*color of background*/
margin: auto;
border: 0px solid #A96500; display: block; /*outside border of menu, 0px is invisible*/
font: bold 100% Georgia, verdana, arial, helvetica, sans-serif;
}
```

Currently the font is set to 'bold' height is 100%, type is Georgia first. If that font is not available the next one available is used and so on. Change percentage to adjust size of font. Change 'bold' to 'normal' the turn off the bold.

Left, Center, Right Location

All the menus are naturally centered in the space given. This is accomplished with the line margin:auto; in the

CSS file. It is used in the 'menuleft*' and 'bottom*' styles.

```
#menuleft { /*Main style for menu*/
/*width: auto;*/
width: 206px; /*Overall width of menu*/
background: #transparent;
margin: auto;
border: 0px solid #A96500; display: block; /*outside border of menu, 0px is invisible*/
}

#bottom { /*Bottom of menu*/
border-top: 1px solid #FE9900; display: block;
background: #ffbf35;
background-image: url('../images/menu-bg-bottom-xprnt.gif'); /*background for bottom*/
background-repeat: no-repeat;
text-align: center;
width: 206px;
padding: 2px 0px 6px 0px;
margin:auto;
color: #000000;
font-weight: bold;
}
```

To move the menu to an exact location left or right replace 'margin:auto' with 'margin-left:0px;' to align to the left. Change the number to 10px to move menu to the right 10 pixels.

```
#menuleft { /*Main style for menu*/
/*width: auto;*/
width: 206px; /*Overall width of menu*/
background: #transparent;
margin: 0px;
border: 0px solid #A96500; display: block; /*outside border of menu, 0px is invisible*/
}

#bottom { /*Bottom of menu*/
border-top: 1px solid #FE9900; display: block;
background: #ffbf35;
background-image: url('../images/menu-bg-bottom-xprnt.gif'); /*background for bottom*/
background-repeat: no-repeat;
text-align: center;
width: 206px;
padding: 2px 0px 6px 0px; /*order = top, right, bottom, left*/
margin:0px;
color: #000000;
font-weight: bold;
}
```

To move the menu vertically use normal webpage building methods e.g. adding line breaks or paragraphs.

Customer Support

If for any reason you need help with Flyout Menu Left please contact me using the form.

[Flyout Menu Support Form](#)

Please be specific in your requests. Mention which menu you are concerned about and what you need help with.

Hope this Helps

Tim